

CyFox[®]

All-in-One HD Gel Electrophoresis System

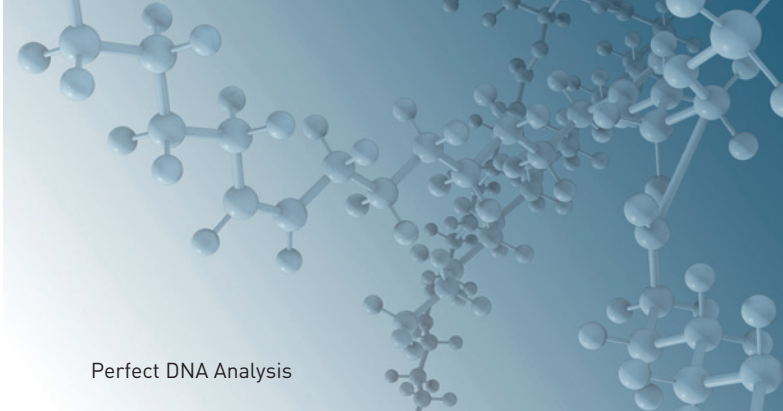
Molecular Diagnostics
Research
Multiplex Technology



Completely Stand-Alone **DNA/RNA** Analysis with Live Imaging



Easy Handling



Perfect DNA Analysis

CyFox[®] Compact, Safe, Fast

THE STAND-ALONE UNIT FOR BOTH MOLECULAR DIAGNOSTICS & RESEARCH

System Components

Integrated Micro Computer & Digital Camera

- _ computer with **CyFox[®] View** software for system control, data storage, time-controlled recording and data management
- _ integrated digital CMOS colour camera for gel documentation
- _ soft-touch handling on glass panel for adjustment of the parameters:
 - LED illumination, running time and voltage
- _ LED ladder for multi level display

Live Observation & Documentation of DNA/RNA

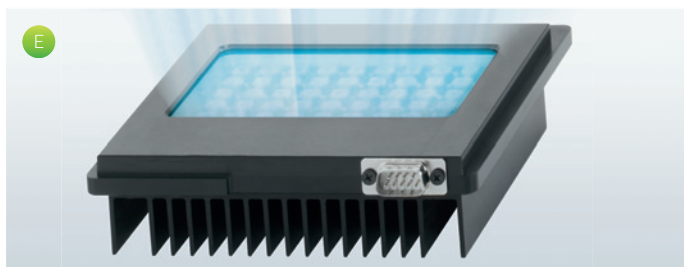
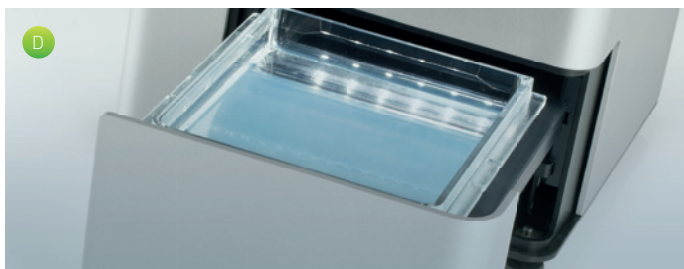
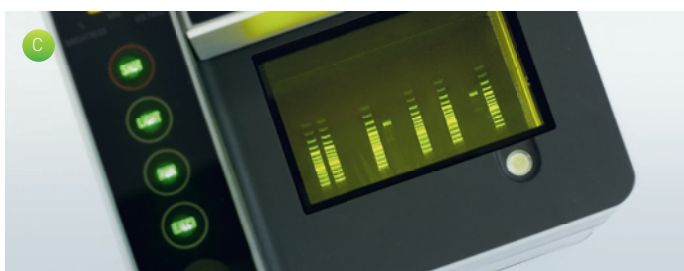
- _ 520 nm bandpass filter for **CySense[®]** / higher sensitivity than EtBr fluorochrome mix, non-toxic (additional dyes on request)
- _ highest sensitivity detection (below 1 ng)
- _ direct sample staining by **CySense[®]**
- _ no pre- or post-run gel staining necessary

HD Electrophoresis Unit Runs with Precast (CySep Kit[™]) or Selfcast Gels

- _ motorized drawer
- _ easily removable electrophoresis chamber
- _ integrated power supply 40-150 V
- _ precast, quality-checked, cost-effective gels and reagents available (**CySep[™] Kit**) or: **gel casting cassette** and combs for self-manufacturing of gel available

Variable Intensity Blue LED Illumination

- _ 455 nm LEDs combined with wavelength-specific diffuser (additional wavelengths on request)
- _ homogenous illumination provides for accurate quantification of separated samples
- _ high durability (> 50.000 hours)





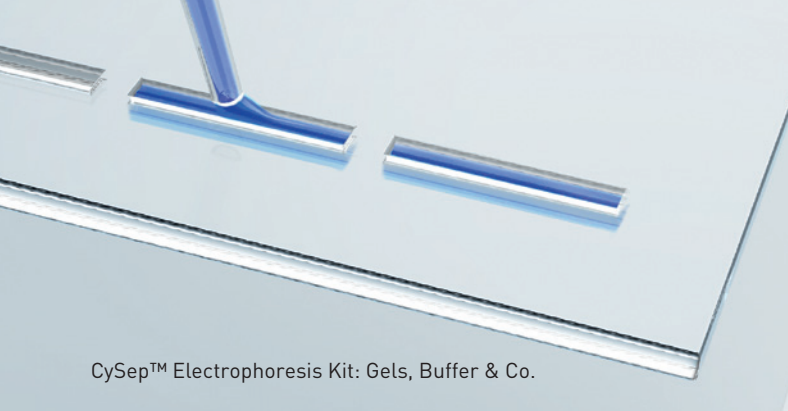
The Only Stand-Alone HD Gel Electrophoresis System

LIVE IMAGING + DOCUMENTATION + ANALYSIS IN HD



Highlights CyFox®

- “all-in-one” DNA/RNA electrophoresis device including gel electrophoresis chamber, LED illumination, Live Display, HD documentation by integrated digital camera, software for image capture, internal data storage and file management, external data transfer
- integrated computer system
- easy benchtop operation in daylight: no dark room required
- easily programmable recording for automatic, time-controlled recording and storage of image files
- availability of dedicated non-toxic high sensitivity staining
- quick and easy data transfer by USB port
- software for automated analysis, compatible for any diagnostic PCR test available for **(a)** medical diagnostic applications and **(b)** for research use
- extremely robust and cost-effective
- compact dimensions [mm]: 210 (W) x 210 (D) x 227 (H)



CySep™ Electrophoresis Kit: Gels, Buffer & Co.



CySense®: Direct High-Sensitivity DNA/RNA Detection

The Fusion: 5 Components = 1 System



A B

C

D

E



CyFox® Software:
Adaptable for PCR tests and
for research applications

- Medical Diagnostics**
- _ automatic analysis of data from separated PCR amplicons of patient and microbiological samples with perfect report generation (certified technology)
 - _ Suitable for single and multiplex PCR tests
 - _ application service



- Research**
- _ perfect 1D gel analyzer software
 - _ automatic evaluation and processing
 - _ densitometry, quantification etc.
 - _ conform to GLP



Innovative Technique



Brilliant Live View

The CyFox® Product Portfolio: A Perfect Team

All-in-One System Plus Dedicated Consumables

The new CyFox® Gel Electrophoresis System combines all of the components necessary for qualitative and quantitative gel analysis of DNA/RNA:

Integrated micro computer with operating system and imaging software, power supply, electrophoresis chamber, LED illumination unit and high resolution digital camera. A special feature of this innovative **all-in-one** and **stand-alone system** is the live observation of the electrophoresis process. The gel run can be examined in daylight directly through the orange band pass filter or on a separate monitor (optionally available) via the integrated camera. A dark room is not required.

The CyFox® generates a high separation effect for nucleic acid fragments and

shows a unique sensitivity for DNA detection down to below 1 ng. This is realized by staining the samples with the specially developed fluorochrome mix **CySense®** and the use of very thin 2% agarose gel. The Partec CySep™ electrophoresis kit contains quality-checked, durable and ready-to-use gels, also including ready prepared buffers for sample preparation and the electrophoresis analysis. If required for certain research applications, gels and buffers can be manufactured by the user. For this purpose, suitable **gel casting cassettes** and compatible combs are available.

Homogenous illumination of the gel via the LED unit allows for precise measurements of DNA/RNA allowing for

accurate quantitation of DNA/RNA by comparison to control bands.

CyFox® Diagnostic / Analysis Software

For medical use Partec offers a fully automatic diagnostic software adaptable for every PCR test. This certified software enables the automatic diagnostics for medical and microbiological testing in both single and multiplex formats.

For research use Partec offers a 1D gel analyzing software offering automated evaluation, densitometry, etc. according to GLP standards.

Technical Data

Dimensions (mm)

Width 210, Depth 210, Height 227

Weight

6 kg

Camera

High resolution 5 megapixel CMOS colour camera

Operating conditions

10-40 °C, 20-85 % rel. humidity

Application

DNA/RNA separation for research use / diagnostics

Manufactured by



Order-No.	Product
CY-S-8001	Partec CyFox® with 455 nm LED-Unit + CyFoxView software
05-9110	CySep™ Electrophoresis Kit _ ready-to-use agarose gels, 2% _ 1x TBE buffer _ loading buffer _ CySense® highly DNA/RNA specific Staining Solution _ 100 basepair standard marker
04-800-1030	CySense® DNA/RNA Staining Solution
04-800-1001	Gel Casting Cassette and Combs for self gel manufacturing
04-800-1002	CyFox® Gel Electrophoresis Chamber (additional)
CY-S-804N	CyFox® LED arrays (add.) in different wavelengths on request
04-800-1003	CyFox® IT package: monitor, keyboard and mouse to connect with CyFox® (optional)
04-800-1004	CyFox® Gel Analysis Software for Research (a) or Diagnostics (b)
04-800-1005	Illuminated Gel Preparation Table



Contact

Partec GmbH
Otto-Hahn-Straße 32
D-48161 Münster
Germany

Phone +49 (0) 2534 8008-0
Fax +49 (0) 2534 8008-90
info@partec.com

Partec GmbH
Am Flugplatz 13
D-02828 Görlitz
Germany

Phone +49 (0) 3581 8746-0
Fax +49 (0) 3581 8746-70
mail@partec.com

Partec North America, Inc.
603 Heron Dr., Unit 9
Swedesboro, NJ 08085
USA

Phone 856 467 0018
US toll-free 888 808 0067
Fax 856 467 0188
partecna@partec.com

Partec Japan, Inc.
3628-46 Kandatsu
Tsuchiura 300-0013
Japan

Phone +81 29 834 7788
Fax +81 29 834 7772
partecjapan@partec.com

Partec Private Limited
E-135, Ground Floor
Lajpat Nagar-I
New Delhi-110 024
India

Phone +91 11 4101 8787
Fax +91 11 4650 2659
partecsouthasia@partec.com

Partec South East Asia
1747/31 Chan Road
Sathorn
10120 Bangkok
Thailand

Phone +66 26 787 663
Fax +66 26 787 663
partecsea@partec.com

Partec S.A.R.L.
14/16 rue Gallieni
91700 Sainte Geneviève
des Bois
France

Phone +33 1 69 04 87 12
Fax +33 1 69 04 90 38
partecfrance@partec.com

Partec Italia S.r.l.
Via. G. Mascherpa 14
20841 Carate Brianza (MB)
Italia

Phone +39 0362 909 143
Fax +39 0362 909 157
partecitalia@partec.com

Partec UK Ltd
Unit 44
Canterbury Innovation
Centre
University Road
Canterbury
Kent CT2 7FG
United Kingdom

Phone +44 1227 811711
Fax +44 1227 811712
partecuk@partec.com

Partec Nordic AB
Industrigatan 44 B
571 38 Nässjö
Sweden

Phone +46 380 16464
Fax +46 380 16466
partecnordic@partec.com

Partec Nederland BV
Middenweg 591 B
1704 BH Heerhugowaard
Nederland

Phone +31 72 5742427
Fax +31 72 5710756
partecnederland@partec.com

Partec Healthcare Limited
No 16 Mafemi Crescent
Utako - District
Abuja
Nigeria

Phone +234 9 8761891
Fax +234 9 8761891
partecnigeria@partec.com

Partec West Africa SARL
01 BP 1323
Ouagadougou
Burkina Faso

Phone +226 50 30 45 59
Fax +226 50 30 45 59
pwa@partec.com

Partec Afrique Centrale
SARL
Rue Bebey Elame
AKWA Douala
B.P. 2326
Douala
Cameroon

Phone +237 33 42 76 12
Phone +237 77 65 41 89
Fax +237 33 42 76 12
pac@partec.com

Partec East Africa Ltd
N.H.I.F. Building, 2nd Floor
Ragati Road
Code 00517
Uhuru Gardens
Nairobi
Kenya

Phone +254 20 272 7355
Fax +254 20 272 7358
pea@partec.com

Partec Southern Africa
(Pty) Ltd
Unit IF, Plot 119
Gaborone International
Finance Park
Gaborone
Botswana

Phone +267 318 1844
Fax +267 318 1841
psa@partec.com

Partec Southern Africa
(Malawi) Ltd
Amina House, Area 6/14
Off Paul Kagame
(Chirambula) Highway
Ground Floor - Unit 10
Lilongwe
Malawi

Phone +265 1 753 199
Fax +265 1 753 198
psa@partec.com



• Certified Management
System
• EN ISO 9001
• EN ISO 13485

MADE IN GERMANY



Complete list of subsidiaries and distributors:

www.partec.com